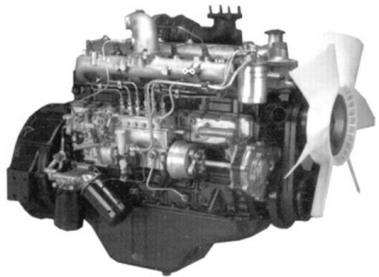


Features

✓ Large Capacity Engine

The FD70 ~ 100NH is equipped with one of the most powerful engine among its class, strong enough to power a 10 ton machine.

Engine: Isuzu 6BG1  
Power: 82.4kW @ 2000rpm  
Torque: 417Nm @ 1500rpm  
Total Displacement: 6,494cc



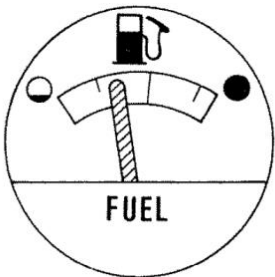
✓ LED Lights

LED lights are equipped as standard. LED lights are known for its durability, suitable for long hours usage.

✓ Travel Hydraulic Interlock

Travel hydraulic interlock is equipped as a standard. Travel and hydraulics cannot be activated if operator does not assume correct seating position.

✓ Memory Type Fuel Gauge



The fuel gauge pointer remains where it was even after key off, thus allowing operator or maintenance personnel to check the fuel level without much hassle.

✓ Double Action Parking Brake

The top button has to be pushed down before the parking brake lever can be released. This prevents accidental release of the parking brake

✓ Suspension Seat

Large trucks are usually operated in outdoor environment and seldom have the luxury of a flat level ground condition. Thoughtfully, these units are equipped with suspension seat to ensure that operator's fatigue is minimized.

ready to  
**perform**  
o your **applications**

Developed for outstanding performance and genuine value for money, the awardwinning\* range of Mitsubishi forklift trucks and warehouse equipment is built to a higher specification to maximize productivity and ensure utter reliability... whatever the application.

It's what you'd expect from one of the world's largest corporations whose companies are at the leading edge of technologies where performance, quality and dependability can never be compromised.

It means that, from a single safe source, we can meet 98% of all handling requirements, supplied to you via a range of competitive finance options including outright purchase, rental or leasing. So your local dealer can advise you on precisely the right product for your application... and your budget.

Moreover, because we understand how much you depend on your Mitsubishi forklift truck, we deliver the highest levels of customer support.



*\* Mitsubishi Forklift Trucks has won four separate Fork Lift Truck Association Annual Awards for Excellence covering the areas of Ergonomics the Environment and Innovation*



[www.mitforklift.com.sg](http://www.mitforklift.com.sg)

©2016 MNA. All rights reserved. All registered trademarks are the property of their respective owners. Printed in Singapore

SMIT0143

04/17

Note: Performance specifications may vary depending on standard manufacturing tolerances, vehicle condition, types of tyres, floor or surface conditions, applications, or operating environment. Trucks may be shown with non-standard options. Specific performance requirements and locally available configurations should be discussed with your Mitsubishi forklift trucks dealer. Mitsubishi forklift trucks follows a policy of continual product improvement. For this reason, some materials, options and specifications could change without notice.

Preliminary Specifications

The information in this document may be subject to change pending final release

FD70-100NH  
Internal Combustion  
Pneumatic Tyre

FD70NH  
FD80NH  
FD100NH



FD70-100NH

Characteristics					
Model			FD70NH	FD80NH	FD100NH
Capacity	Q	(kg)	7000	8000	10000
Load Centre	C	(mm)	600	600	600
Power source: (battery, diesel, LPG, petrol)			Diesel	Diesel	Diesel
Operator type: pedestrian, (operator)-standing, -seated			Seated	Seated	Seated
Dimensions					
Lift height	h3	(mm)	3000	3000	3000
Free lift	h2	(mm)	215	205	205
Fork dimensions (thickness, width, length)	S / B1 / L1	(mm)	70 x 150 x 1220	75 x 170 x 1220	75 x 175 x 1220
Tilt Angle (forward/backward)	δ/Β	°	6/12	6/12	6/12
Length to fork face (includes fork thickness)	L2	(mm)	3600	3940	4255
Overall width	B	(mm)	1995	2165	2245
Height with mast lowered	h1	(mm)	2500	2700	2850
Overall height with mast raised	h4	(mm)	4420	4330	4330
Height to top of overhead guard	h6	(mm)	2450	2560	2560
Seat height	h7	(mm)	1310	1415	1415
Overall length		(mm)	4820	5160	5475
Load distance, axle to fork face	X	(mm)	625	720	710
Performance					
Travel speed, with/without load		km/h	26,0 / 30,0	25,0 / 30,0	24,0 / 30,0
Lifting speed, with/without load		m/s	0,46 / 0,55	0,45 / 0,47	0,39 / 0,41
Lowering speed, with/without load		m/s	0,45 / 0,50	0,45 / 0,45	0,47 / 0,34
Rated drawbar pull, with/without load		N	52900 / 21600	57300 / 27400	57300 / 31400
Gradeability, with/without load		%	29 / 19	27 / 19	22 / 20
Turning radius	Wa	(mm)	3360	3650	3900
Minimum intersecting Aisle Width	Ast 3	(mm)	5405	5790	6030
Right Angle Stacking Isle Width	Ast 4	(mm)	3020	3290	3540
Weight					
Truck weight, without load / including battery (simplex mast, lowest lift height)		kg	9360	10960	12300
Axle loading with maximum load, front/rear (simplex mast, lowest lift height)		kg	14505 / 1825	17025 / 1925	20090 / 2202
Axle loading without load, front/rear (simplex mast, lowest lift height)		kg	3750 / 5606	4810 / 6147	5423 / 6880
Wheels, Chassis					
Tyres ( front/rear)			Pneumatic/Pneumatic	Pneumatic/Pneumatic	Pneumatic/Pneumatic
Number of wheels, front/rear (x=driven)			4x / 2	4x / 2	4x / 2
Tyre dimensions, front			8.25X15-14PR	9.00X20-12PR	9.00X20-14PR
Tyre dimensions, rear			8.25X15-14PR	9.00X20-12PR	9.00X20-14PR
Wheelbase	y	(mm)	2250	2500	2800
Tread width (centre of tyres), front		(mm)	1470	1600	1600
Tread width (centre of tyres), rear		(mm)	1700	1700	1700
Ground clearance under mast (lowest point)		(mm)	190	245	245
Ground clearance at centre of frame		(mm)	225	320	320
Brake					
Parking brake			Hand/ Mechanical	Hand/ Mechanical	Hand/ Mechanical
Service brakes			Foot/ Hydraulics	Foot/ Hydraulics	Foot/ Hydraulics
Powertrain					
Manufacturer / Type			Isuzu 6BG1	Isuzu 6BG1	Isuzu 6BG1
Rated output (JIS112)		kW/rpm	82.4/ 2000	82.4/ 2000	82.4/ 2000
Max torque (JIS42.5)		Nm/rpm	417/1500	417/1500	417/1500
Number of cylinders / cubic capacity		cm³	6 / 6494	6 / 6494	6 / 6494
Type of drive control (Number of gears, forward/reverse)			Powershift 2/2	Powershift 2/2	Powershift 2/2
Maximum operating pressure for attachments		Mpa (kgf/cm2)	19.6 (200)	19.6 (200)	19.6 (200)
Battery (Number-Volts/Ampere hrs)		V/Ah	2-12/1980	2-12/1980	2-12/1980
Noise level, value at operator's ear (EN 12053)		dB(A)	85	85	85

